

Hall

An exhibition which introduces the International Library of Children's Literature is available. Events such as concerts are also held here.

Museum

Exhibitions which cover a variety of subjects on children's literature are held here.

Teens' Research Room

Materials useful for teens' research are available here.

Gallery of Children's Literature

A gallery showing the history of Japanese children's books from the Meiji era to the present is available here.

Children's Library

Classic picture books, stories or standard knowledge books mainly for children up to elementary school age are available here. Please feel free to ask staff at the counter about anything you need.

Meet the World

Materials on various countries and regions of the world which will enable a deepening of your interest and understanding of other countries are available here.

Story Hour Room

Come and join in the story hour for children on Saturdays (except summer vacations).
14:00 4 years old - 1st grade pupils
15:00 2nd grade pupils and older

*There is also a cafeteria on the 1st floor of the Brick Building.

The International Library of Children's Literature is the sole national library which specializes in and has a collection of children's literature. The library has three main functions. The first is to collect children's books from Japan and other countries and to provide assistance with research on children's books and child reading as a library specialized in children's literature. The second function is to provide creative opportunities for children to become familiar with libraries and reading as a place for children to interact with books. The third function is to introduce the attraction of children's books as a museum of children's books.

The Brick Building was originally built more than a century ago in 1906 as the Imperial Library. The building then became the International Library of Children's Literature in 2000, and in 2015 the Arch Building was constructed. The Brick Building is a Western, Renaissance style building from the Meiji era and has been designated as a historical building by the Tokyo Metropolitan Government.

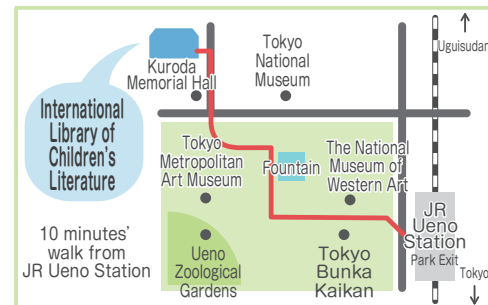
User Guide

Library open hours : 9:30-17:00

Closed : Mondays

National Holidays
(except Children's Day on May 5)
Year-end and New Year's Holidays
Third Wednesdays of the month (for refiling)

Access

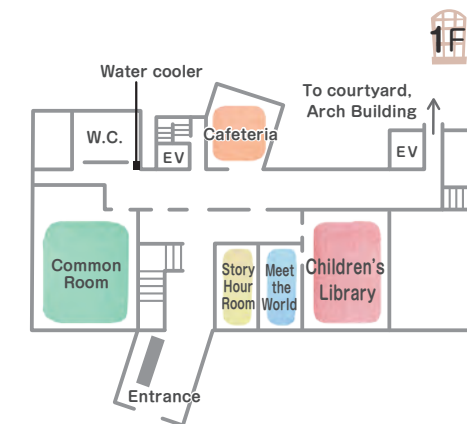
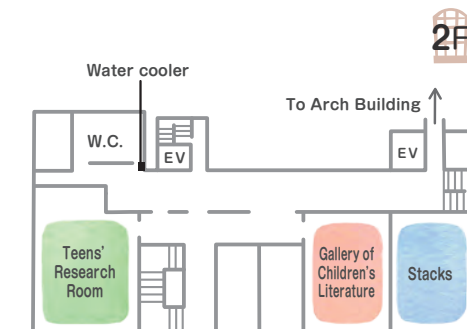
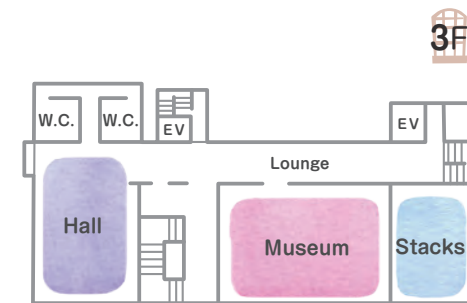


(2016.11)



12-49 Ueno Park, Taito-ku, Tokyo
110-0007, Japan
Tel : +81-3-3827-2053
<http://www.kodomo.go.jp/>

Brick Building



National Diet Library International Library of Children's Literature

Buildings of the International Library of Children's Literature

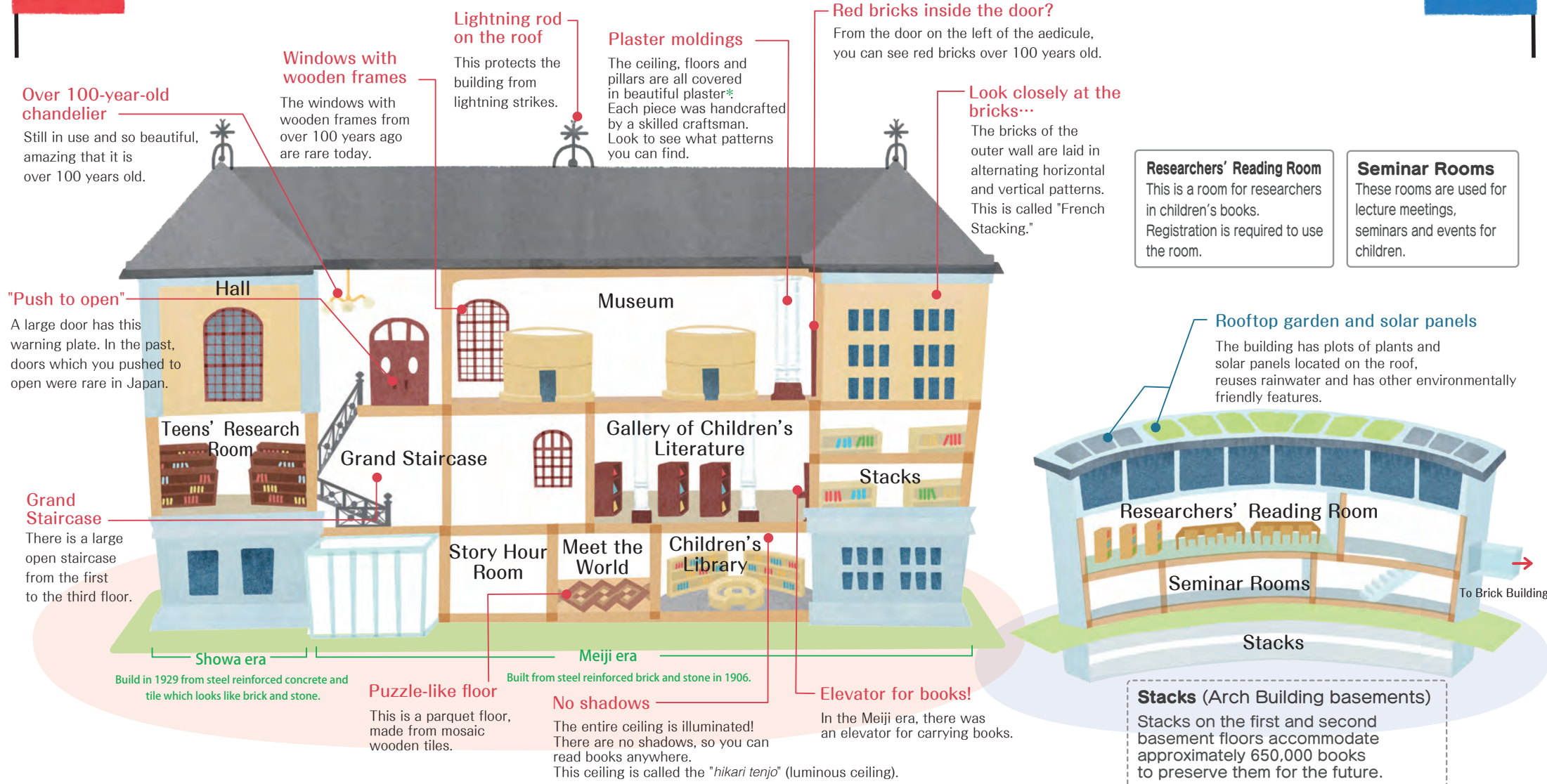
The library has the old, historic **Brick Building**, and also the new **Arch Building**.

Brick Building

Take a trip back to 100 years ago while searching for some of the building's wonders!

Arch Building

This is a new building that was built in 2015. The entire building is shaped in a curve.



*Plaster was made by mixing slaked lime, shell-lime, finely chopped paper and water.